

LOOK and LEARN SERIES
scavenger
hunts

The **LOOK** and

LEARN series of scavenger hunts at the Marland Grand Home features items from three of our most prominent exhibit areas: The American Indian of the Plains Tribes, the 101 Ranch and Wild West Show and the Marland Family of Marland Oil. As you tour the site, **LOOK** for artifacts and exhibit items relating to these three groups and **LEARN** important facts about their meaning in days gone by.....



Clues:



1. Read all standing signs and signs in cases for answers. Also look for items on display.
2. Answers to questions 1 through 9 can be found on the first floor, question 10 through 28 on the second floor. Look for the exhibit that matches the question's subject matter.
3. Remember not to run in museum areas.

Marland's Grand Home
1000 E. Grand Ave.
Ponca City, OK 74601
580-767-0427

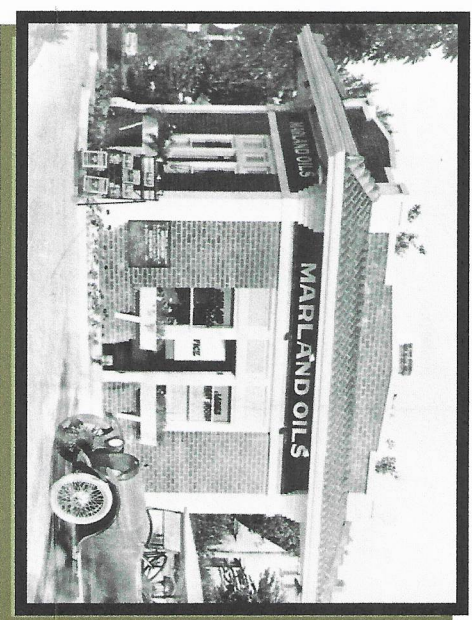
For answers to the questions found in this brochure see staff at the front desk.

LOOK and LEARN series
scavenger
hunts



Note: Clues on back side...

**THE MARLAND
FAMILY LAND
MARLAND OIL**



**MARLAND'S
GRAND HOME**

First Floor

1. E.W. and Mary Virginia Marland were...
 - a. President and First Lady of the United States
 - b. Ponca City Mayor and Wife
 - c. Founder of an Oil Company and Wife
 - d. Winners of the Nobel Peace Prize
 - e. King and Queen of England
2. Who painted the large oil painting of the fox hunt hanging in the library?
 - a. Picasso
 - b. Randall Davey
 - c. Michelangelo
 - d. Leonardo Da Vinci
 - e. Bryant Baker
 - f. Walt Disney



3. What was the last name of the family who lived in the home after the Marlands and collected fine antique furniture for the house?
 - a. McFadden
 - b. Moran
 - c. Barnes
 - d. Paris
 - e. Roosevelt
4. Find the hand-painted black and white china. What scenes are painted on it?
 - a. Birds
 - b. Dogs
 - c. Fox Hunts
 - d. Marland's Home
 - e. Palace of Versailles
 - f. Highclere Castle

5. How much did a loaf of bread cost in the 1920s?
 - a. 10 cents
 - b. 50 cents
 - c. 1.00 dollar
6. Where is the 1920s telephone located?
 - a. Entryway
 - b. Library
 - c. Living Room
 - d. Sunroom
 - e. Back Hallway
7. Find the E.W. Marland Time Line. In what year was the Marland Oil Company founded?
 - a. 1908
 - b. 1911
 - c. 1916
8. What were the names of E.W. Marland's personal train car and yacht?
 - a. The George and Lydie
 - b. The Twiddle Dee and Twiddle Dumb
 - c. The Ponca City and Whitemarsh
 - d. The Silver Streak and Blue Moon
 - e. Apollo 13 and Starship Enterprise
9. E.W. Marland's gardener came from what country?
 - a. England
 - b. Russia
 - c. Germany
 - d. Japan



Second Floor

10. Name the two sporting events brought to Ponca City by E.W. Marland.
 - a. Rugby
 - b. Polo
 - c. Cricket
 - d. Fox Hunting
11. What did the locals call a fox hunting event?
 - a. Riding to the Hounds
 - b. Tally Ho
 - c. Kentucky Derby
 - d. Par for the Course
 - e. Super Bowl
12. In fox hunting, what does M.F.H. stand for?
 - a. Man for Horses
 - b. Mr. Fox Hunt
 - c. Master of the Fox Hounds
 - d. Mighty Fox Hunter
13. How many polo teams did Ponca City have in the 1920s?
 - a. One
 - b. Four
 - d. Eight
 - c. Ten
14. How many polo mallets (sticks) can you find in the Horse and Hounds exhibit?
 - a. One
 - b. Three
 - c. Five
 - d. A Dozen (12)

15. Find the picture of the polo players. What design is on their polo jerseys (shirts)?
- Hearts
 - Triangles
 - Stripes
 - Marland Crest
16. Name the four Ponca City Polo teams of 1924.
- Rough Necks
 - Cowboys
 - Yellows
 - Blues
 - Whites
 - Reds
17. Who in the Marland family was a good polo player?
- Mary Virginia
 - George
 - E.W.
 - Lydie
 - Aunt Lottie
18. What was the name of the hunting camp used by E.W. Marland and the oil men?
- Bar L
 - OK Corral
 - Woolaroc
19. Who were E.W. Marland's oil company partners from 1911 to 1916?
- Mary Virginia Marland and Bill McFadden
 - Frank and Waite Phillips
 - Joe, George and Zack Miller
 - George and Martha Washington
20. What was the name of the big gusher oil well that started Marland's oil company in 1911?
- Black Gold Gusher #9
 - Marland's 1911
 - Wille Cries for War #9
 - Big Okie #9
21. Find the red and white Marland Oil sign on the wall. What shape was used in its logo?
- Diamond
 - Star
 - Triangle
 - Circle
 - Octagon
22. Which four of these items can be found on E.W. Marland's office desk?
- Jelly Beans
 - Replica of an Old Time Telephone
 - Cigar
 - Magnifying Glass
 - Typewriter
 - Marland Stationary
23. What large appliance was placed in a closet for Mary Virginia Marland's comfort?
- Hair Dryer
 - Air-Conditioner
 - Coffee Maker
24. What was the name of the doctor whose vintage medical equipment is on display?
- Dr. Spock
 - Dr. Neal
 - Dr. Bones
25. Which six of these items can you find in the cedar linen closet in the hallway?
- Broom
 - Iron with an Ironing Board
 - Sewing Machine
 - Clothes Washer and Dryer
 - Jewelry
 - Luggage
 - Hammers and Nails
 - Umbrella
26. Lydie and George Marland were E.W. and Mary Virginia Marland's adopted cousins.
- True or False
27. What six activities are represented in the painted wall murals in Lydie's bedroom?
- Tennis
 - Golf
 - Water Skiing
 - Swimming
 - Walking
 - Beach Ball Toss
 - Horseback Riding
 - Bowling
 - Camping



28. What was Lydie Marland's favorite thing to do on the east terrace of the home?

- Roller Skate
- Dance
- Picnic
- Slumber Parties
- Grow Flowers
- Sing